

Soane House, London, SE17 2JF

FIBRE BROADBAND, HEATING AND HOT WATER INCLUDED IN RENT

HMO APPROVED

A generous three bedroom maisonette apartment; located in Walworth, only a walk away from Elephant and Caste underground station offering transport across London.

The ground floor of the apartment boasts two large double bedrooms and storage space. The first floor features a naturally bright living space with access to the private balcony, a separate well-kept kitchen with space to dine, a tidy family bathroom and the third double bedroom.

The surrounding area has many local amenities such as Burgess Park, local restaurants, bars, cafes, supermarkets and convenience stores.

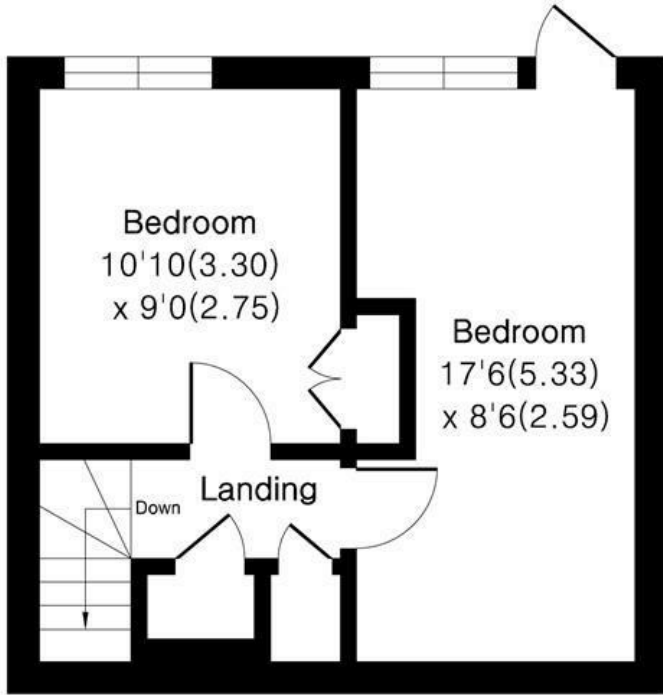
- HEATING AND HOT WATER INCLUDED IN RENT
- Generous Three Bedroom Maisonette
- Private Balcony
- Good Transport Links
- Plenty of Storage
- FREE FIBER BROADBAND
- Excellent Location

Alex & Matteo
ESTATE AGENTS

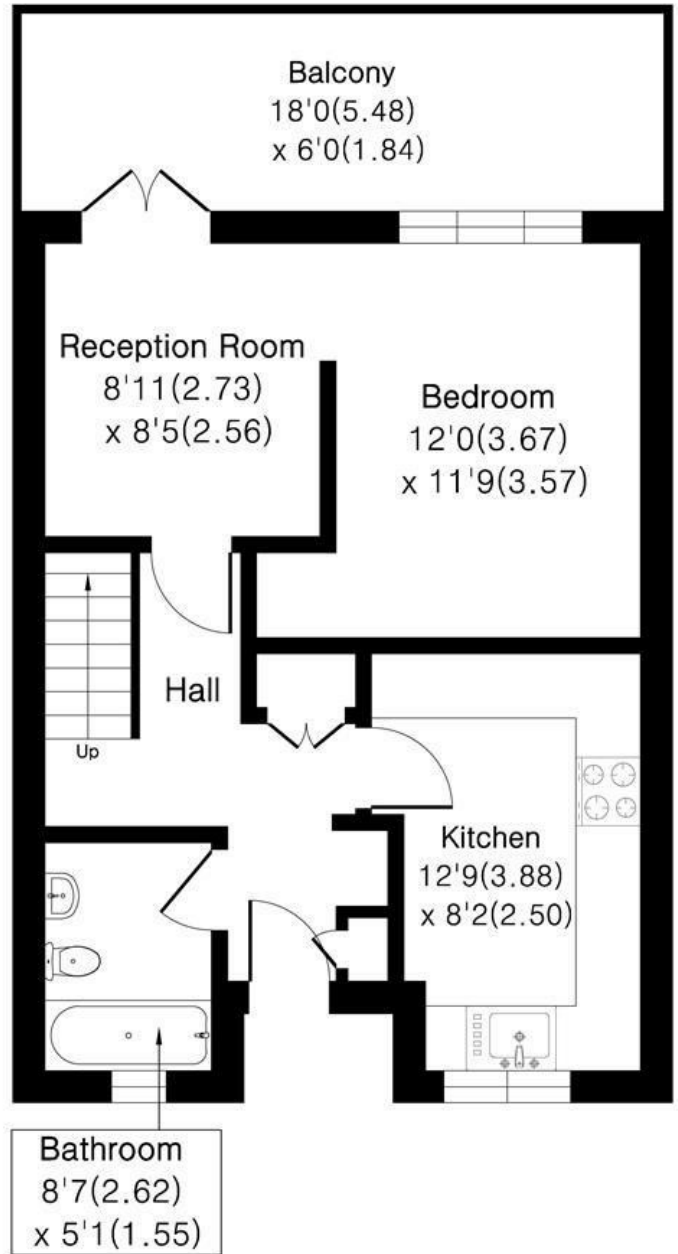
£2,400 Per month

Soane House SE17

Approximate Area = 759 sq ft / 70.5 sq m



Ground Floor



First Floor



Floor plan Produced in accordance with RICS Property Measurement 2nd Edition.
Incorporating International Property Measurement Standards (IPMS2 Residential).
Produced for Alex & Matteo Estate Agents.

